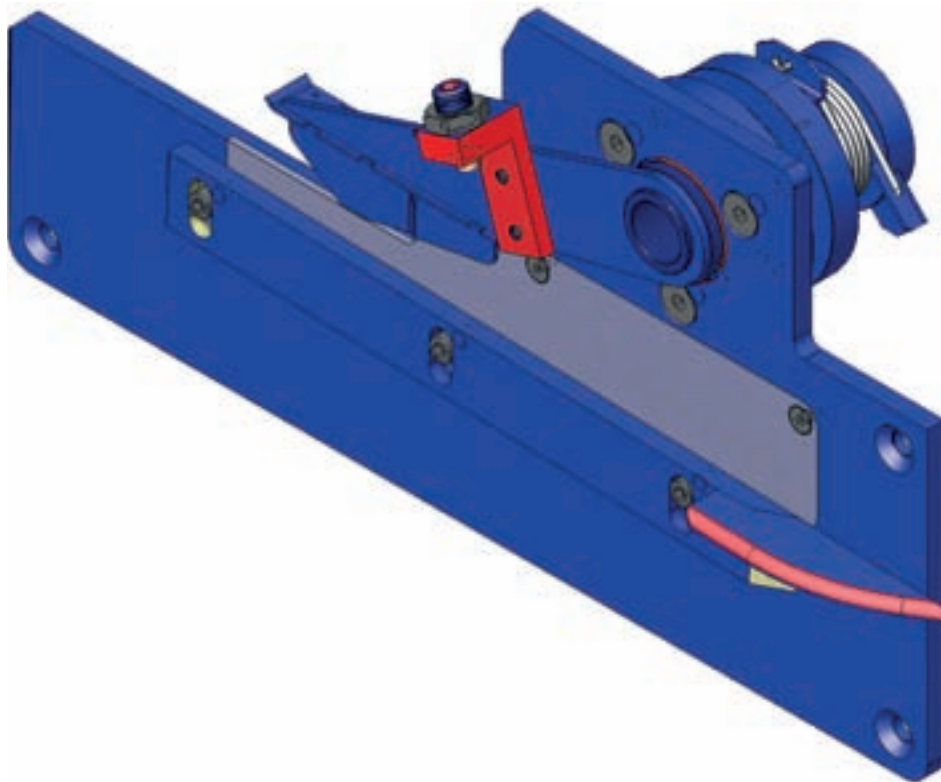




Autoline™ Deep Sea System

New Base Plate for the Baiting Section Lower Part of the SuperBaiter

Changes/Improvements have been made to the lower-part base plate, which will be supplied with all new machines as of January 1, 2008. All older machines can be upgraded by replacing the old lower-part base plate with the new one.



Mustad

YOUR BOTTOM LINE IS OUR BUSINESS



Autoline™ Deep Sea System

New Base Plate for the Baiting Section Lower Part of the SuperBaiter

Objectives

- Reduce the problem of wear and tear resulting from hooks moving along the plate.
- Replaceable wearing part that quickly can be replaced. The wearing part is made of special stainless steel that has a hardness of approx. 58 HRc. The part has been tested onboard vessels and shows minimal wear and tear in comparison to the previous model.

Changes

The following part is phased out:

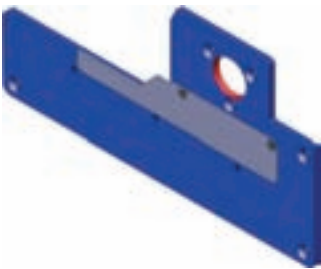
- Base plate lower part item no. 140080/160002.

New parts that replace the phased out part:

- Base Plate lower part complete, item no. 140288/160155.

This unit consists of the following parts:

- Base Plate lower part (with countersunk recess), item no. 140289/160156.
- Wearing part, item no. 140290/160157.
- 2 pcs Countersunk head screws, item no. 20103.



Base Plate lower part complete,
item no. 140288/160155



Base Plate lower part (with
countersunk recess), item no.
140289/160156



Wearing part (replaceable)
item no. 140290/160157

Spare part:

There should be at least one extra of the wearing part, item no 140290/160157, included in the spare part kit, as well as two countersunk head screws, item no. 20103.

Mustad 

YOUR BOTTOM LINE IS OUR BUSINESS